

Data Sheet (30.05.2014)

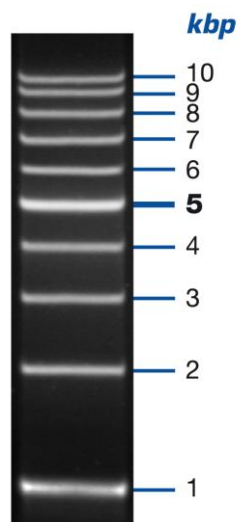
mi-1 kb DNA Marker Go

1 kb to 10 kb log scale DNA ladder

ready-to-use

Cat.-No.	Amount	Conc.
mi-M8205	100 rx (500 µl)	0.1 µg/µl

For research purposes only!
Only for *in vitro* use!



0.6 % Agarose gel

Storage Buffer

10 mM Tris-HCl (pH 7.5), 10 mM EDTA, 10 % (w/v) Glycerol, Bromphenol Blue and Xylene Cyanol FF

Storage

Store at -20 °C in the dark.

Short term storage (up to 4 weeks) at 4 °C possible.

Description

mi-1 kb DNA Marker Go consists of 10 DNA fragments ranging from 1 kb to 10 kb and is supplied in a ready-to-use format containing an blue tracking dye. The marker is ideal for size determination of double stranded DNA fragments on agarose gels generated by PCR or restriction digest.

DNA log scale ladders are well suited for combination if small and large fragments should be analyzed on one gel.

DNA Fragments and their approx. quantity

1, 2, 3, 4, 5, 6, 7, 8, 9, 10 kb
{10 or 15 ng/ µl}

The marker is supplied in a ready-to-use mix at a concentration of 0.105 µg/ µl.

For the best result load 5 µl of marker per lane.

Tracking dye movement in TAE buffer

DNA fragment size	Agarose conc.	Bromphenol blue	Xylene Cyanol
20-400 bp	3,6 %	40 bp	280 bp
50-1000 bp	3,0 %	60 bp	500 bp
100-2000 bp	2,4 %	100 bp	900 bp
200-4000 bp	1,8 %	200 bp	1800 bp
500-10000 bp	1,2 %	500 bp	4500 bp
1000-30000 bp	0,6 %	1200 bp	12000 bp